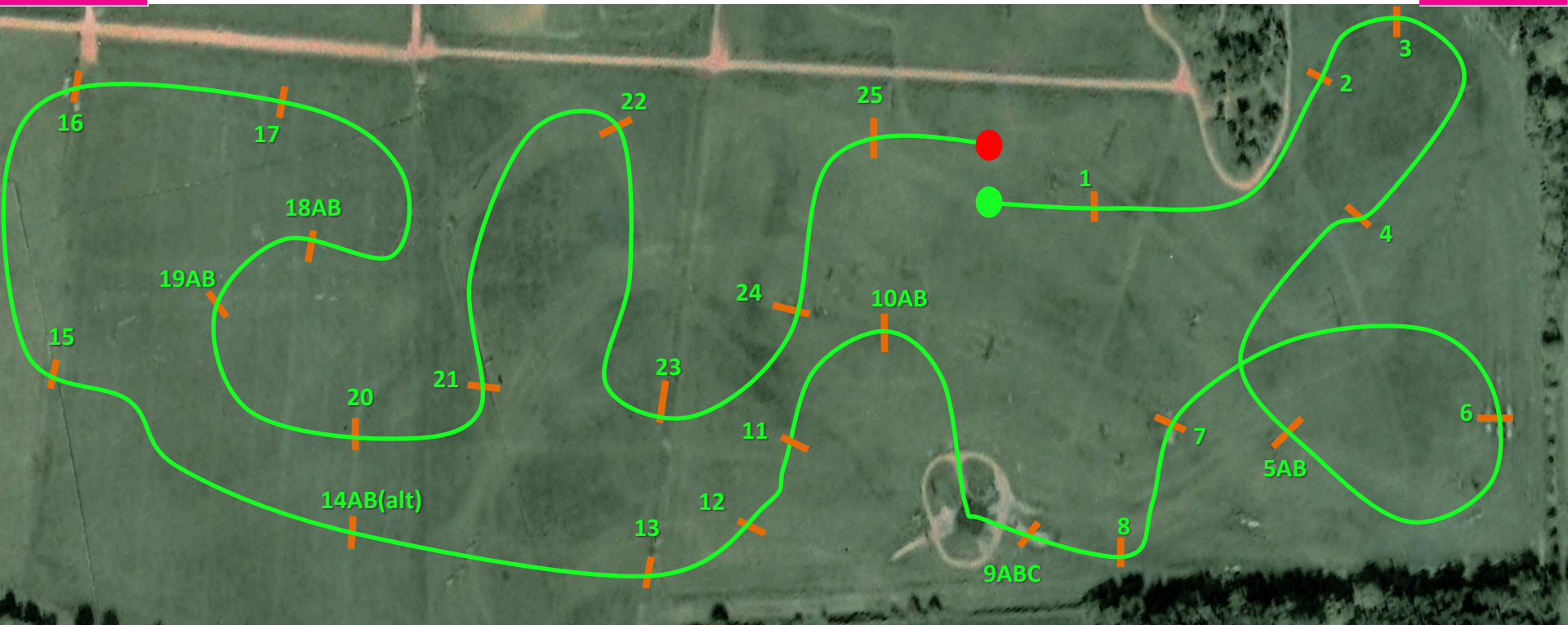
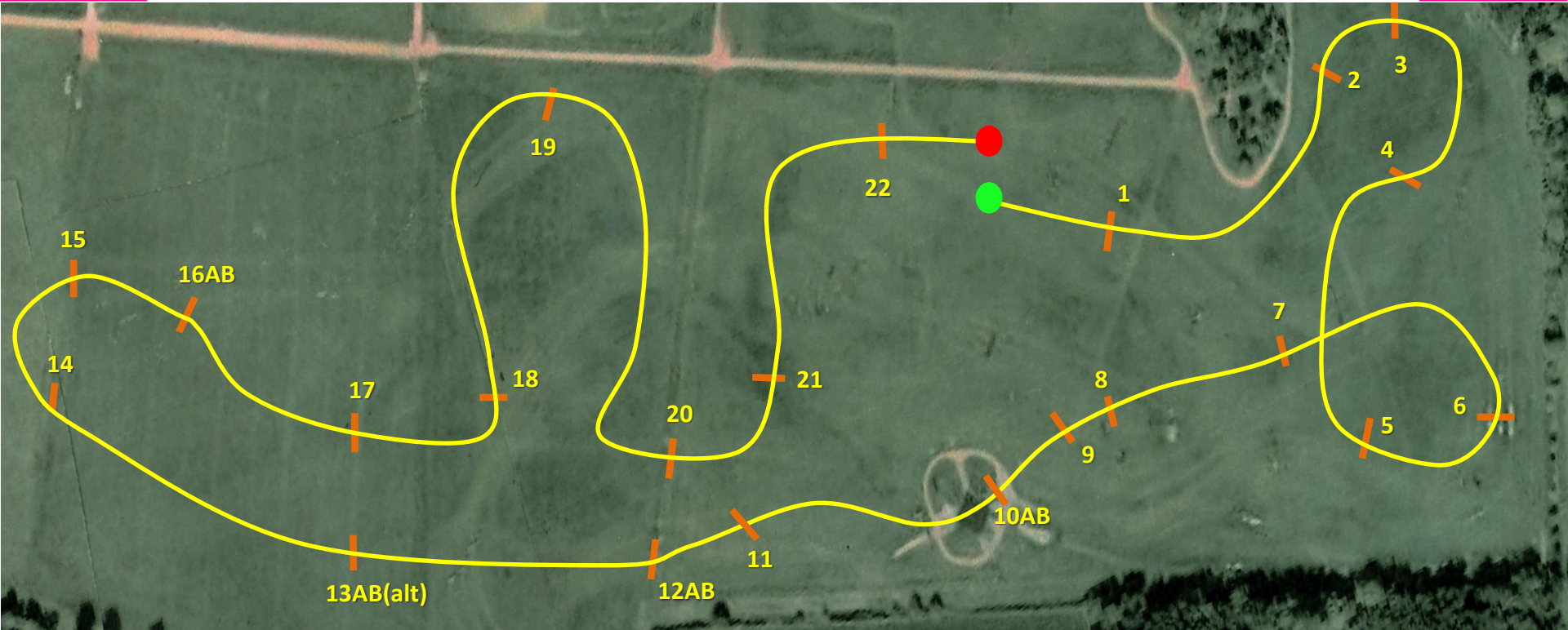


Kelsall Hill: Intermediate Course Plan Sept 2020



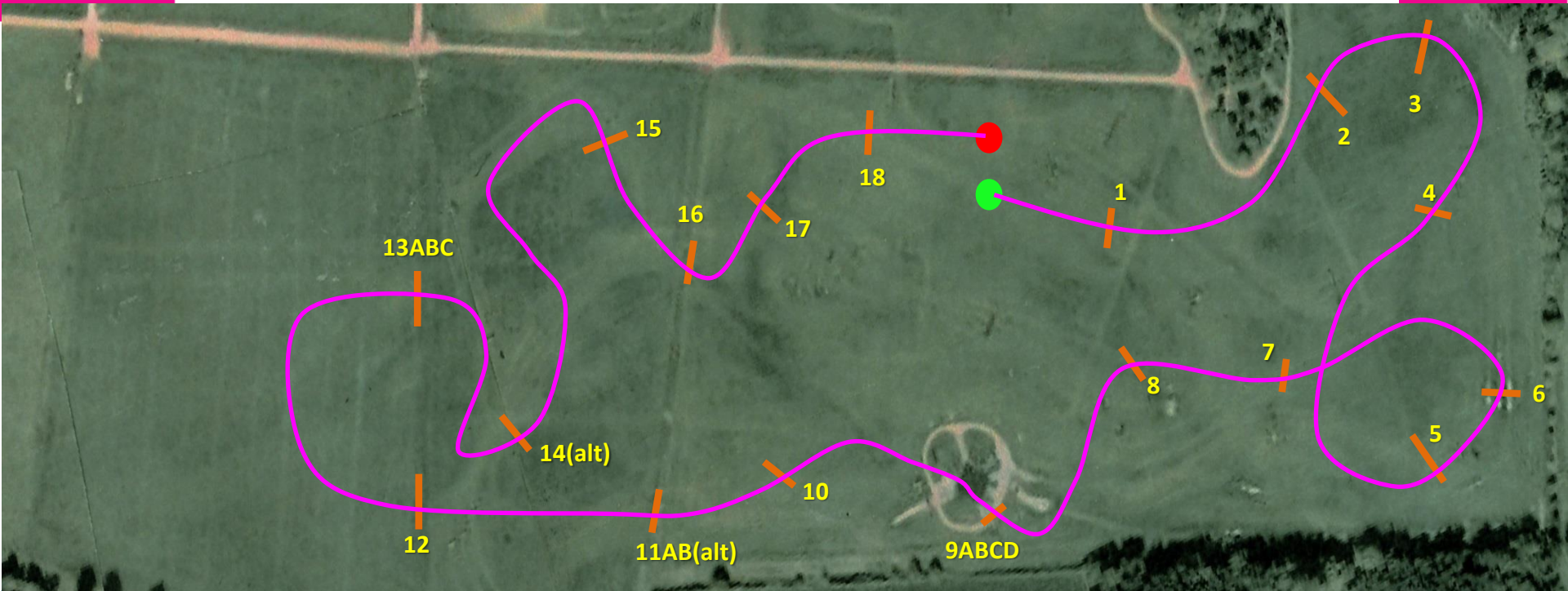
1: Roll Tops	6: Trakehner	11: Brush Corner	16: Triple Bar	21: Ski Jump
2: Poplar Logs	7: Stick Pile	12: Kelsall Hill Feeders	17: Gypsy Caravan	22: Gypsy Caravan
3: Lodges	8: Trakehner	13: Oxer	18AB: Corner Combo	23: Log Pile
4: House	9ABC: Water Complex	14AB(alt): Owl Table/Corner	19AB: Tudor House/Keepers Cottage	24: Giants Table
5AB: Tables	10AB: Double Brush/Brush Coup	15: Into Beyond	20: Stone Table	25: Kelsall Hill Express

Kelsall Hill: Novice Course Plan Sept 2020



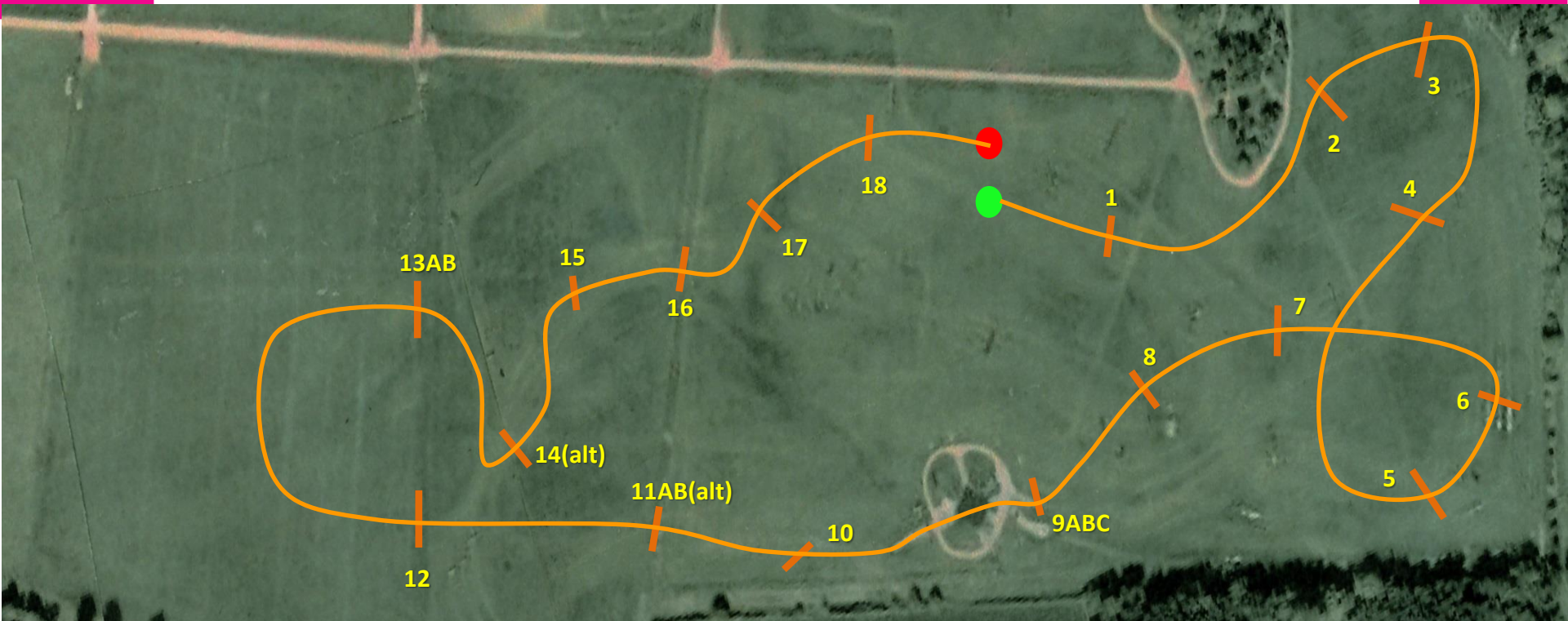
1: Roll Tops	6: Trakehner	11: Kelsall Hill Feeders	16AB: Corner Combo	21: Giants Table
2: Poplar Logs	7: Stick Pile	12AB: Oxer	17: Stone Table	22: Kelsall Hill Express
3: Lodges	8: Brush Coop	13AB(alt): Owl Table/Corner	18: Ski Jump	Cross Country Schooling over BE Course from Wednesday 30th September until Sunday 11th October 2020
4: Log Table	9: Double Brush	14: Into Beyond	19: Giants Table	
5: Table	10AB: Water Complex	15: Elephant Trap	20: Log Pile	
To book please ring the office on 07809 689972				

Kelsall Hill: BE100 Course Plan Sept 2020



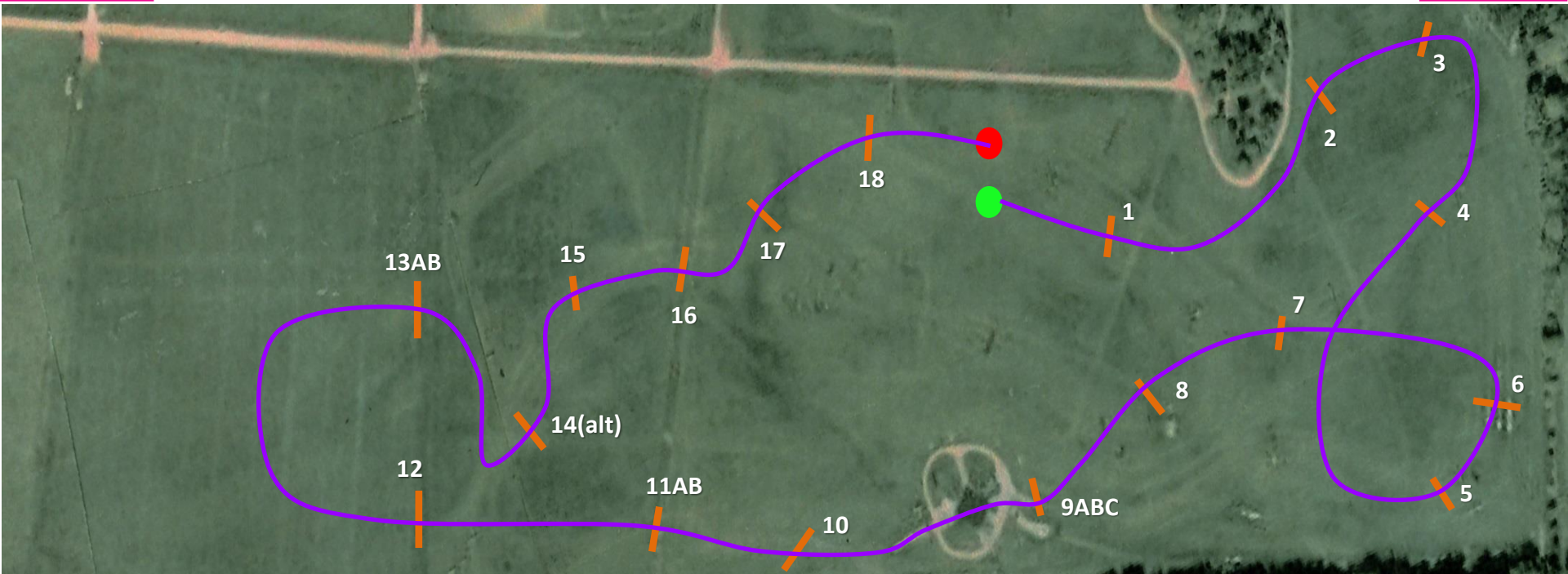
1: Roll Tops	6: Trakehner	11AB(alt): Oxer Complex	16: Brush
2: Poplar Logs	7: Stick Pile	12: Sheep Feeder	17: Roll Top
3: Lodge	8: Rabbit Hutch	13ABC: Sheep Feeder Complex	18: Kelsall Hill Express
4: Log Pile	9ABCD: Water Complex	14(alt): Ski Jump	Cross Country Schooling over BE Course from Wednesday 30 th September until Sunday 11 th October 2020 To book please ring the office on 07809
5: Haywain	10: Kelsall Hill Feeders	15: Fishing Cabin	

Kelsall Hill: BE90 Course Plan Sept 2020



1: Roll Tops	6: Trakehner	11AB(alt): Oxer Complex	16: Brush
2: Poplar Logs	7: Stick Pile	12: Sheep Feeder	17: Roll Top
3: Lodge	8: Rabbit Hutch	13AB: Sheep Feeder Complex	18: Kelsall Hill Express
4: Log Pile	9ABC: Water Complex	14(alt): Ski Jump	Cross Country Schooling over BE Course from Wednesday 30th September until Sunday 11th October 2020 To book please ring the office on 07809 689972
5: Haywain	10: Kelsall Hill Feeders	15: Cabin	

Kelsall Hill: BE80(T) Course Plan Sept 2020



1: Roll Tops	6: Trakehner	11AB: Oxer	16: Brush
2: Poplar Logs	7: Stick Pile	12: Sheep Feeder	17: Roll Top
3: Lodge	8: Rabbit Hutch	13AB: Sheep Feeder Complex	18: Kelsall Hill Express
4: Log Pile	9ABC: Water Complex	14(alt): Ski Jump	Cross Country Schooling over BE Course from Wednesday 30 th September until Sunday 11 th October 2020 To book please ring the office on 07809 689972
5: Haywain	10: Kelsall Hill Feeders	15: House	